



**Fiscal Year 2007**



## Stormwater Utility

### *Project Report*

#### Lost Island Road

**Project Number:** 2007-58

**Start Month/Year:** April 2006

**Completion Month/Year:** July 2006

**Project Cost:** \$21,996

**Tax District:** 200 - Lady's Island

**Council District:** 7

**Drainage/Water Quality Issue:** There was flooding of an adjacent property during spring tide.

**Resolution:** This project cleaned out 70 feet of roadside ditch. The Utility also installed 250 feet of roadside pipe, 100 feet of outfall pipe, a flap gate, and two driveway aprons. Additionally, the Utility constructed three catch basins and installed a stone pad. Lastly, the Utility installed stones and grass and applied grass for stabilization.

**Area Benefited:** This project alleviated the flooding and provided drainage for a portion of Lost Island Road.

**Before**



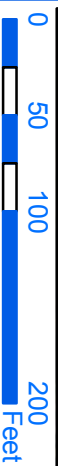
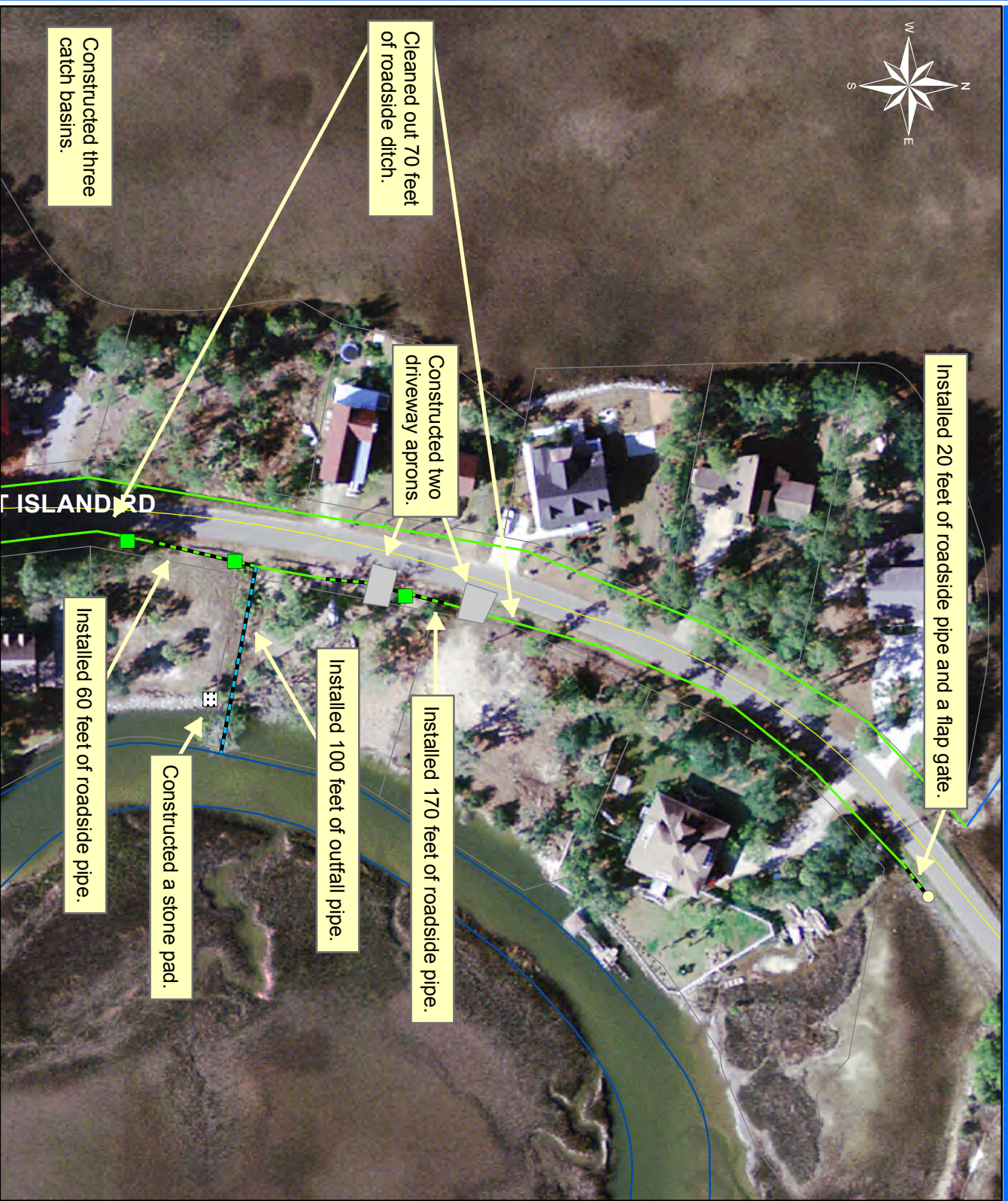
**During**



**After**







1 inch = 100 feet

Installed 20 feet of roadside pipe and a flap gate.

Cleaned out 70 feet of roadside ditch.

Constructed three catch basins.

Constructed two driveway aprons.

Installed 170 feet of roadside pipe.

Installed 100 feet of outfall pipe.

Constructed a stone pad.

Installed 60 feet of roadside pipe.

**Project:**  
Lost Island

**Activity:** Drainage Improvements

**Project#:** 2007-58

**Township:**  
Lady's Islands

**Completed:**  
July 2006

Drainage	
	Rivers
	Stream
	Outfall
	Lateral
	Lateral Pipe
	Roadside
	Roadside Pipe
	Road Pipe
	Crossline
	DW
	Access Pipe
	Piped
	Bleeder
	Parcels

Print Date: 10/06





## Stormwater Utility

### *Project Report*

#### Westbury Park

**Project Number:** 2007-46

**Start Month/Year:** August 2006

**Completion Month/Year:** September 2006

**Project Cost:** \$21,102

**Tax District:** 600 - Bluffton

**Council District:** 4

**Drainage/Water Quality Issue:** The retention pond was causing flooding of the surrounding properties.

**Resolution:** This project mowed and cleaned out 3,000 feet of outfall ditch. The Utility also upsized one access pipe. Additionally, the Utility cleaned out three retention pond overflow pipes. Lastly, the Utility installed stones and applied grass for stabilization.

**Area Benefited:** This project alleviated the flooding and provided drainage for a portion of Simmonsville Road and surrounding properties.

**Before**



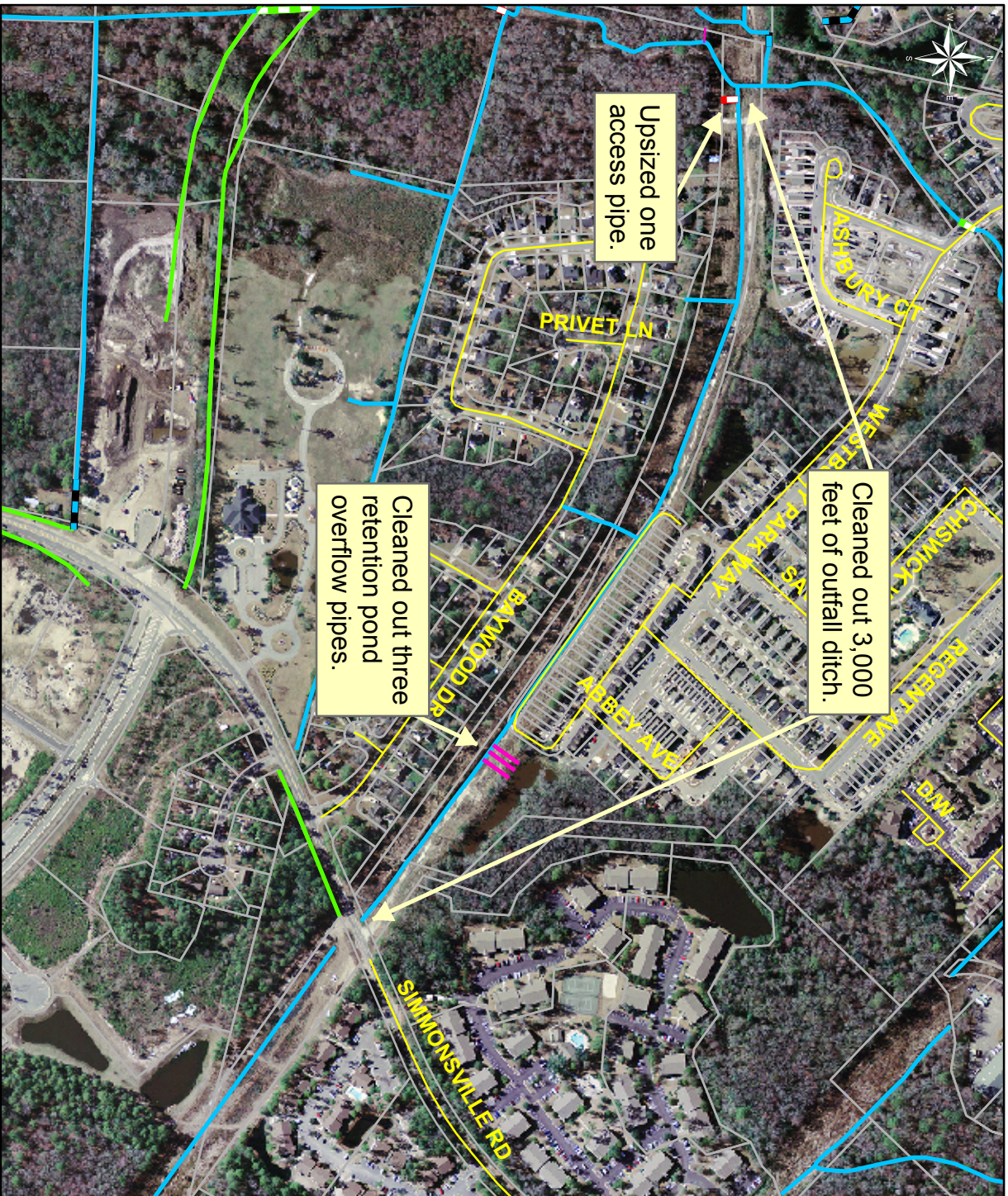
**During**



**After**







1 inch = 500 feet

Legend	
<b>Drainage</b>	
	River
	Stream
	Outfall
	Lateral
	Lateral Pipe
	Roadside
	Roadside Pipe
	Road Pipe
	Crossline
	DW
	Access
	Piped
	Bleeder
	Parcels

Printing Date: 12/6/06

**Project:**  
Westbury Park

**Activity:**  
Ditch Maintenance

**Project#:** 2007-46

**Township:**  
Bluffton

**Completed:**  
September 2006





## Stormwater Utility

### *Project Report*

#### Irongate Subdivision

**Project Number:** 2003-50

**Start Month/Year:** March 2005

**Completion Month/Year:** October 2006

**Project Cost:** \$73,173

**Tax District:** 100 - Port Royal Island

**Council District:** 6

**Drainage/Water Quality Issue:** There was standing water in the roadside and outfall ditches because the contractor installed the driveway pipes incorrectly. The elevation of the driveway pipes varied.

**Resolution:** In a joint project with the developer, twenty-eight driveway pipes were lowered to correct elevation. The Utility cleaned out 9,910 feet of roadside and outfall ditch. This project also cleaned out 640 feet of existing driveway pipes and removed one catch basin. Lastly, the Utility installed stones and applied grass for stabilization.

**Area Benefited:** This project alleviated flooding and provided drainage for the entire subdivision.

**Before**



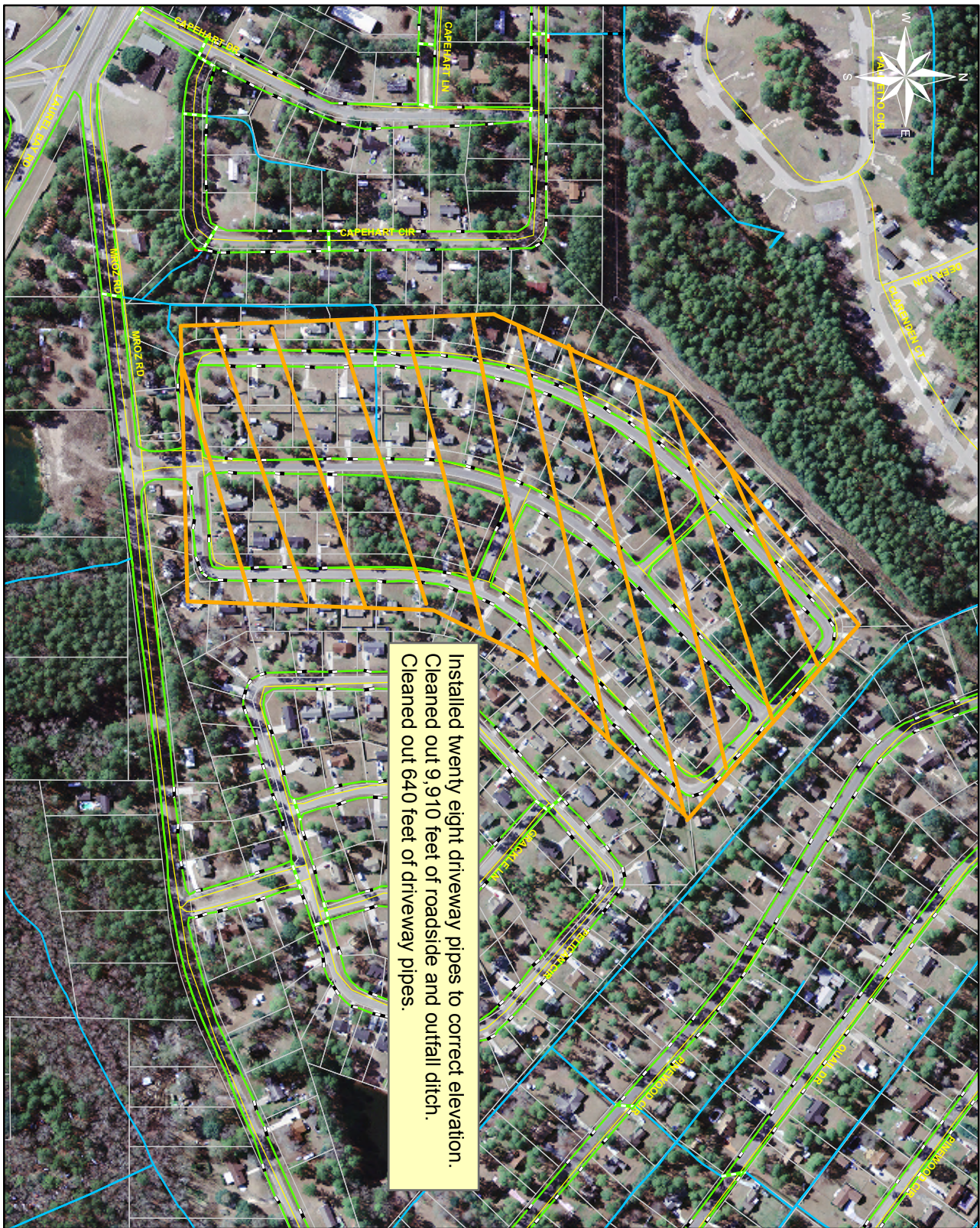
**During**



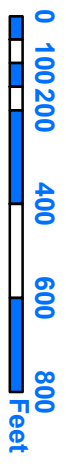
**After**







Installed twenty eight driveway pipes to correct elevation.  
 Cleaned out 9,910 feet of roadside and outfall ditch.  
 Cleaned out 640 feet of driveway pipes.



1 inch = 409 feet



	Project Area
	Rivers
	Streams
	Outfalls
	Laterals
	Lateral Pipes
	Roadside
	Roadside Pipe
	Road Pipe
	Crossline
	DW
	Access
	Piped
	Bleeder
	Parcels

**Project:**  
 Irongate  
 Subdivision

**Activity:** Drainage  
 Maintenance

**Project#:** 2003-50

**Township:**  
 Port Royal Island

**Completed:**  
 October 2006





## Stormwater Utility

### *Project Report*

Town of Hilton Head Island –  
Cordillo Parkway/Coligny Park

**Project Number:** 2007-77

**Start Month/Year:** September 2006

**Completion Month/Year:** November 2006

**Project Cost:** \$41,574

**Tax District:** 510 - Town of Hilton Head Island

**Council District:** 3

**Drainage/Water Quality Issue:** There was a sinkhole on Cordillo Parkway, standing water in the outfall ditch and surrounding properties, and a washout of the roadside ditch.

**Resolution:** This project mowed and cleaned out 360 feet of outfall ditch, cleaned out 970 feet of roadside ditch, and repaired a washout of the roadside ditch. The Utility also upsized a single crossline pipe to a twin crossline pipe. Additionally, the Utility installed straw mat and stones and applied grass for stabilization. The pipes were provided by South Carolina Department of Transportation.

**Area Benefited:** This project relieved the standing water and provided drainage for portions of Cordillo Parkway and surrounding properties.

**Before**



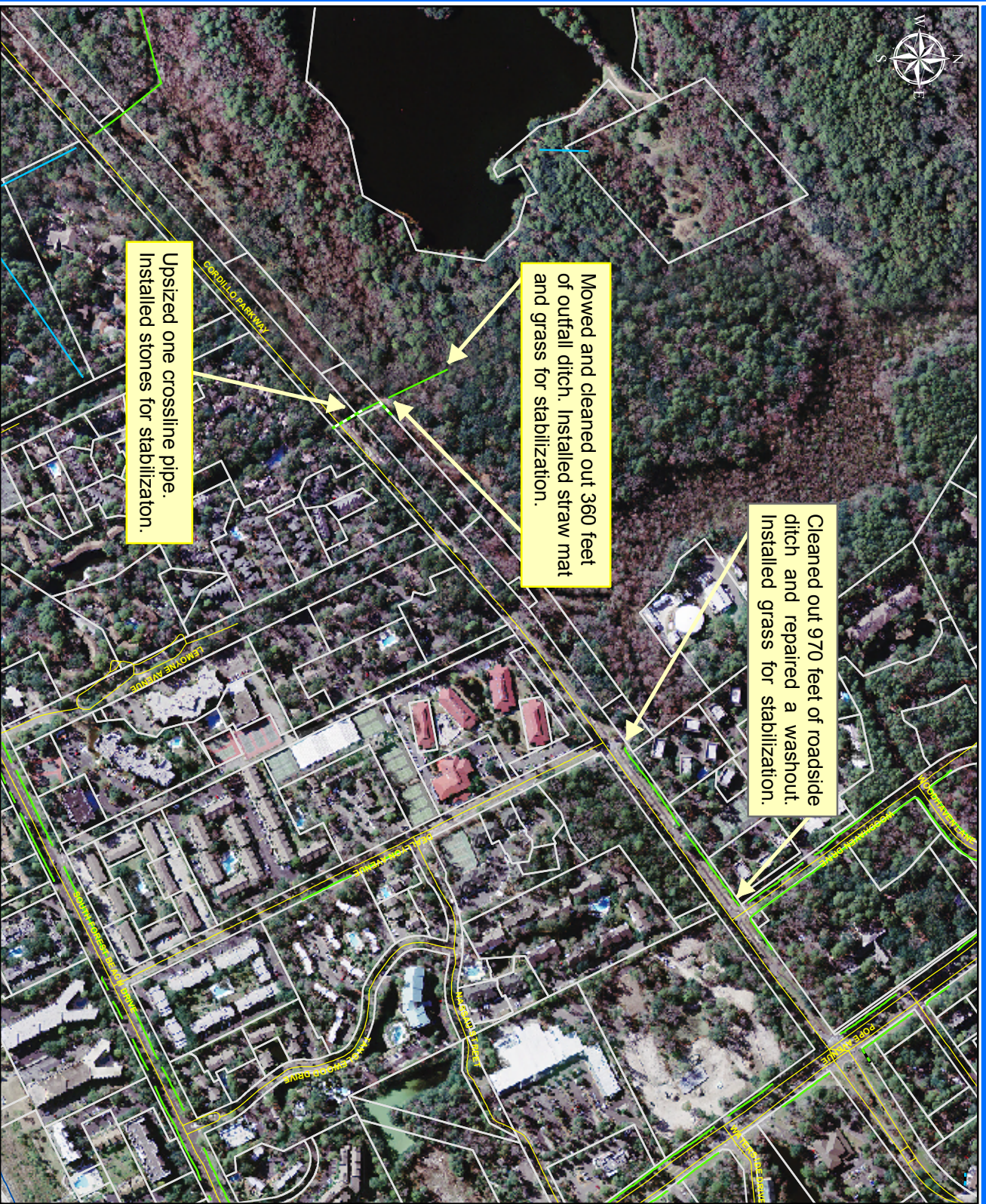
**During**



**After**







1 inch = 559 feet

Drainage Type	
	River
	Stream
	Outfall
	Lateral
	Lateral Pipe
	Roadside
	Roadside Pipe
	Road Pipe
	Crossline
	DW
	Access
	Piped
	Bleeder
	Parcels

**Project:**  
Town of Hilton Head  
Island - Cordillo  
Parkway and Coligny  
Park

**Activity:**  
Drainage Maintenance

**Project#:** 2007-77

**Township:**  
Town of Hilton  
Head Island

**Completed:**  
November 2006

Printing Date: 4/3/07





## Stormwater Utility

### *Project Report*

City of Beaufort - Depot Road

**Project Number:** 2006-07

**Start Month/Year:** December 2004

**Completion Month/Year:** February 2007

**Project Cost:** \$720,523

**Tax District:** 120 - City of Beaufort

**Council District:** 9

**Drainage/Water Quality Issue:** There was flooding on Waight Street, Rhett Street, Bray Street, Meritta Avenue and adjacent properties.

**Resolution:** This project mowed and cleaned out 2,250 feet of outfall ditch, constructed valley drain on Merritt Avenue and temporarily removed 100 feet of railroad tracks. The Utility installed one headwall, one plunge pool, one water quality structure, 310 feet of roadside pipe, 2,430 feet of outfall pipe, ten crossline pipes, thirty-seven catch basins, and one property drain pipe. The Utility also constructed two catch basins to accommodate existing utilities and replaced four catch basin tops. Additionally, the Utility lowered portions of sewer lines and realigned gas lines. Lastly, the Utility installed grass, stones, straw mat, and applied grass for stabilization.

**Area Benefited:** This project alleviated flooding and provided drainage for Depot Road, Waight Street, Rhett Street, Meritta Avenue, and a portion of Bray Street.

**Before**



**During**



**After**





**Project:**  
 City of Beaufort -  
 Depot Road Map 1

**Activity:**  
 Drainage  
 Improvement

**Project #:**  
 2006-07

**Township:**  
 City of Beaufort

**Completed:**  
 February 2007



Legend	
Drainage Type	
	River
	Stream
	Outfall
	Lateral
	Lateral Pipe
	Roadside
	Roadside Pipe
	Road Pipe
	Crossline
	DW
	Access
	Piped
	Bleeder
	Parcels



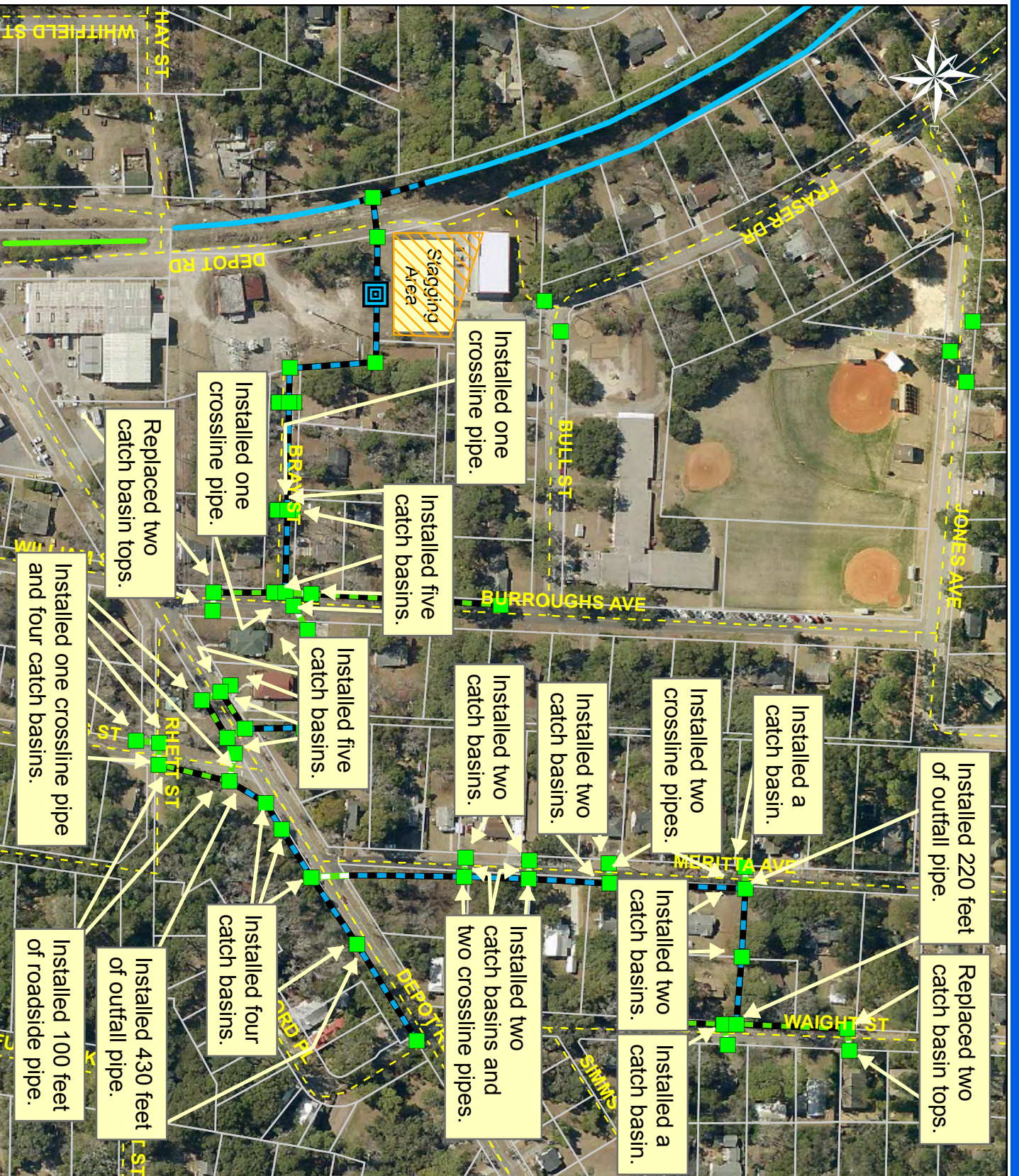
**Project:**  
 City of Beaufort -  
 Depot Road Map 2

**Activity:**  
 Drainage  
 Improvement

**Project #:**  
 2006-07

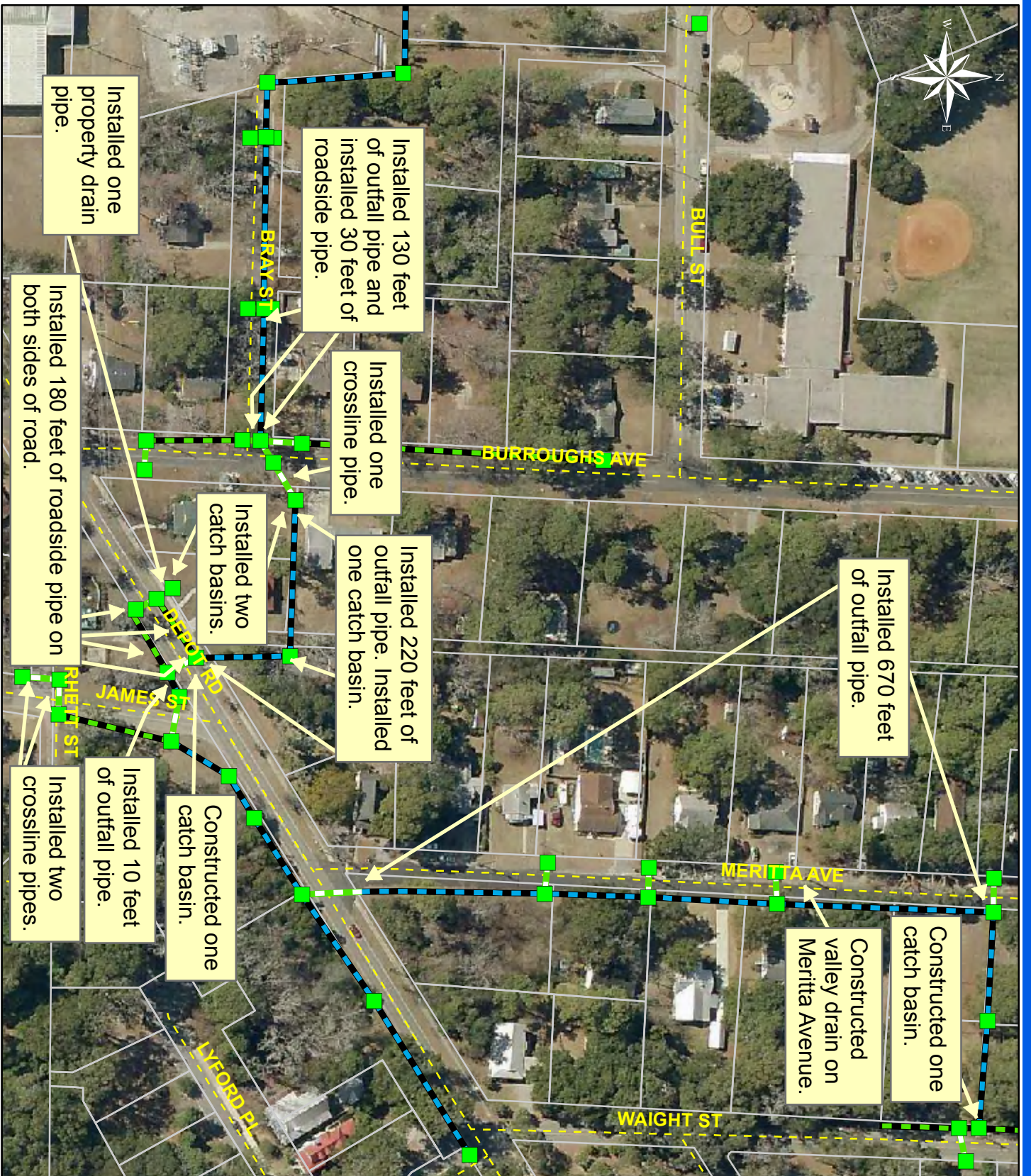
**Township:**  
 City of Beaufort

**Completed:**  
 February 2007



Legend	
Drainage Type	
	River
	Stream
	Outfall
	Lateral
	Lateral Pipe
	Roadside
	Roadside Pipe
	Road Pipe
	Crossline
	DW
	Access
	Piped
	Bleeder
	Parcels





**Project:**  
City of Beaufort -  
Depot Road Map 3

**Activity:**  
Drainage  
Improvement

**Project #:**  
2006-07

**Township:**  
City of Beaufort

**Completed:**  
February 2007

Legend	
Drainage Type	
	River
	Stream
	Outfall
	Lateral
	Lateral Pipe
	Roadside
	Roadside Pipe
	Road Pipe
	Crossline
	DW
	Access
	Piped
	Bleeder
	Parcels





## Stormwater Utility

### *Project Report*

#### Chowan Creek Road

**Project Number:** 2007-41

**Start Month/Year:** October 2006

**Completion Month/Year:** March 2007

**Project Cost:** \$29,740

**Tax District:** 200 - Lady's Island

**Council District:** 7

**Drainage/Water Quality Issue:** The adjacent properties to the outfall ditch were flooding and there was standing water in the roadside ditch.

**Resolution:** This project cleared 1,170 feet of outfall ditch, and cleaned out and reconstructed 1,730 feet of outfall ditch. The Utility also installed four property drain pipes and three access pipes. Additionally, the Utility installed stones and sediment logs, and applied grass for stabilization.

**Area Benefited:** This project alleviated the flooding and standing water. This project also provided drainage for portions of Chowan Creek Road, Sea Island Parkway, and surrounding properties.

**Before**



**During**



**After**







**Project:**  
Chowan Creek  
Road

**Activity:** Drainage  
Maintenance

**Project#:** 2007-41

**Township:**  
Lady's Island

**Completed:**  
March 2007

Legend	
DRAINAGE	
	River
	Stream
	Outfall
	Lateral
	Lateral Pipe
	Roadside
	Roadside Pipe
	Road Pipe
	Crossline
	DW
	Access
	Piped
	Bleeder
	Parcels

Printing Date: 4/25/07





## Stormwater Utility

### *Project Report*

Little Capers Road

**Project Number:** 2004-68

**Start Month/Year:** August 2006

**Completion Month/Year:** March 2007

**Project Cost:** \$44,428

**Tax District:** 300 - St. Helena Island

**Council District:** 7

**Drainage/Water Quality Issue:** The easement for this outfall ditch did not allow enough area to maintain the ditch.

**Resolution:** This project cleared and realigned 750 feet of outfall ditch and maintenance access to the property line and backfilled 430 feet of existing outfall ditch. The Utility also installed 490 feet of twin outfall pipe, installed stones and applied grass for stabilization.

**Area Benefited:** The project allowed this outfall to be routinely maintained. It also provided drainage for portions of Little Capers Road and Surf Drive.

**Before**



**During**



**After**







**Project:**  
 Little Capers Road  
 Outfall

**Activity:** Drainage  
 Maintenance

**Project#:** 2004-68

**Township:**  
 Lady's Island

**Completed:**  
 March 2007

Legend	
	River
	Stream
	Outfall Ditch
	Lateral Ditch
	Roadside
	Crossline
	DW
	Access
	Piped
	Bleeder
	Parcels

Printing Date: 4/25/7





## Stormwater Utility

### *Project Report*

Town of Bluffton - Habitat for Humanity

**Project Number:** 2004-46

**Start Month/Year:** March 2007

**Completion Month/Year:** March 2007

**Project Cost:** \$32,262

**Tax District:** 610 - Town of Bluffton

**Council District:** 4

**Drainage/Water Quality Issue:** The primary outfall ditch for this housing complex was deep and a safety hazard. Also, the access and easements for the drainage system within the complex were narrow thus preventing the ditches from being routinely cleaned out.

**Resolution:** The Utility cleaned out 400 feet of outfall ditch and hand cleaned 200 feet outfall ditch. This project also installed 880 feet of outfall pipes. Additionally, the Utility installed stones and applied grass for stabilization.

**Area Benefited:** The project allowed the drainage system to be routinely maintained and provided drainage for portions of Shultz Road and surrounding properties.

**Before**



**During**



**After**







**Project:**  
Town of Bluffton -  
Habitat for Humanity

**Activity:**  
Drainage  
Improvement

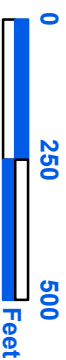
**Project#:** 2004-46

**Township:**  
Town of Bluffton

**Completed:**  
March 2007

Legend	
Drainage Type	
River	
Stream	
Outfall	
Lateral	
Lateral Pipe	
Roadside	
Roadside Pipe	
Road Pipe	
Crossline	
DW	
Access	
Piped	
Bleeder	
Parcels	

1 inch = 343 feet







## Stormwater Utility

### *Project Report*

#### Roseida Road/Powell Drive Outfall

**Project Number:** 2007-44

**Start Month/Year:** March 2006

**Completion Month/Year:** April 2007

**Project Cost:** \$112,965

**Tax District:** 100 - Port Royal Island

**Council District:** 8

**Drainage/Water Quality Issue:** There was standing water in Powell Drive roadside ditches. The intersection of Powell Drive and Burbage Lane was flooding. Also, two properties adjacent to Powell Drive were experiencing flooding of their yards.

**Resolution:** This project cleared 3,190 feet of outfall ditch, cleaned out and reconstructed 6,320 feet of maintenance access and outfall ditch, cleaned out 100 feet of roadside ditch, and cleaned out 1,020 feet of outfall ditch, and reconstructed the maintenance access. The Utility also installed 360 feet of roadside pipe, 120 feet of outfall pipe, five access pipes, and seven property drain pipes. Lastly, the Utility installed stones and applied grass for stabilization.

**Area Benefited:** This project improved the drainage of nearly 250 acres in the Burton community.

**Before**



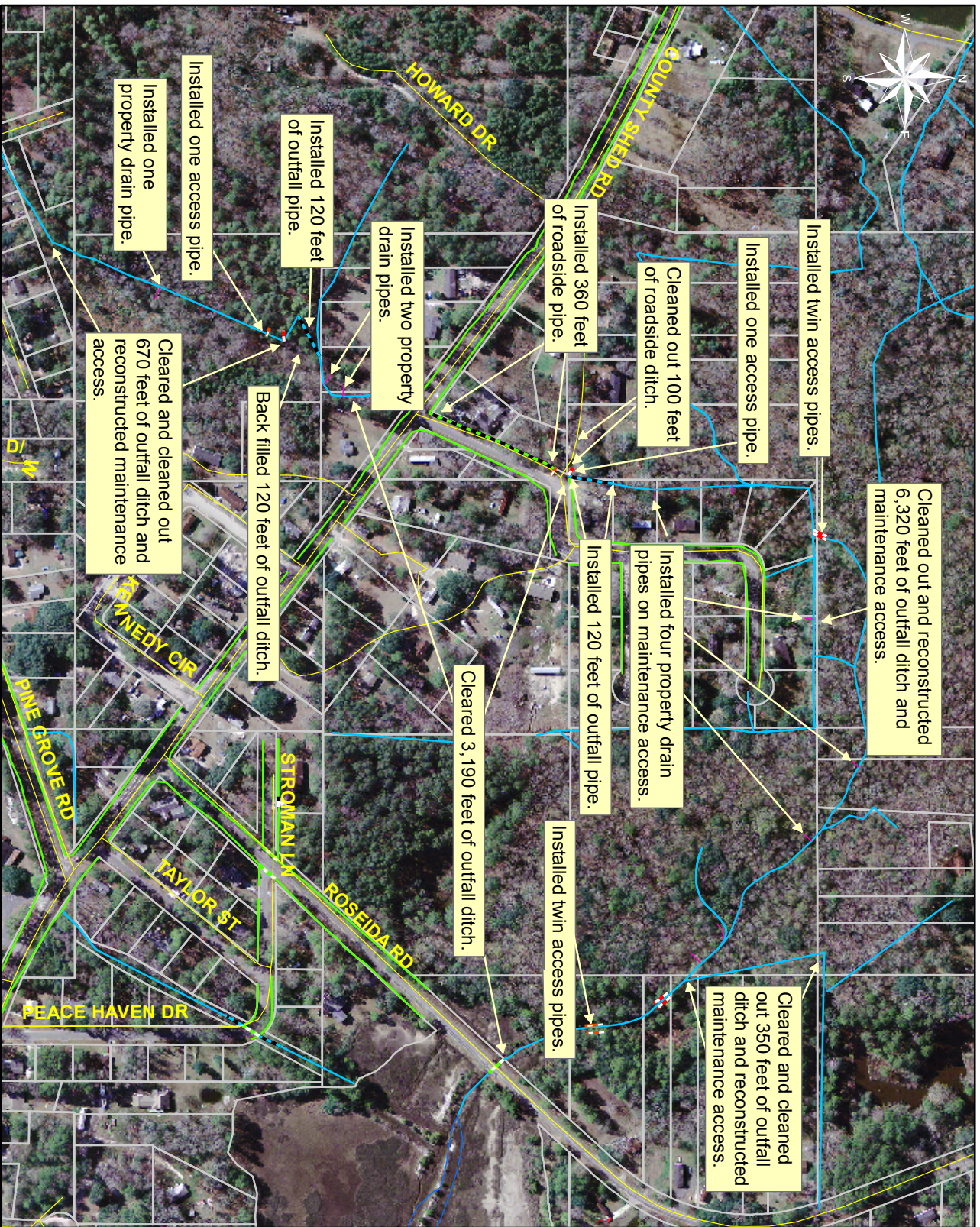
**During**



**After**







0 100 200 400 600 800 Feet

1 inch = 391 feet

Legend	
	River
	Stream
	Outfall Ditch
	Lateral Ditch
	Roadside
	Roadside Pipe
	Crossline
	DW
	Access
	Piped
	Bleeder
	Parcels

**Project:**  
 Roseida Road and Powell Drive

**Activity:** Drainage Maintenance

**Project#:** 2007-44

**Township:** Port Royal Island

**Completed:** April 2007